

redefining sitting comfort

EXGEL[®]

redefining sitting comfort

EXGEL®



What is EXGEL®?



Background

EXGEL was developed as ultimately soft and stable material to reduce the risk of decubitus ulcer. KAJI CORPORATION has been utilizing EXGEL for various products by combining excellent characteristics of EXGEL and own products' development ability and manufacturing technology.

Characteristics

EXGEL's flexibility is extremely high; it stretches about 20 times and able to restore to its original form. Its soft and slow recovery natures are gentle to human's skin, and realize ideal skin contact possible. EXGEL also has an excellent shock absorbability, and proved more than 10 times high shock absorbability than general urethane foam in tests.

Comments from professional

Sitting in the same position for a long time can cause pressure and shear forces that obstruct blood flow, and it can increase the risk of decubitus ulcers.

The pressure under the tissue is considered to be 3-5 times higher than that of skin surface, and skin tissues can be damaged once shear forces applied.

Gel material can buffer shear forces and redistribute the pressure, and is suitable for seating supports.

Therefore, the gel is considered to be effective for preventing decubitus ulcers, as well as comfortable seating.

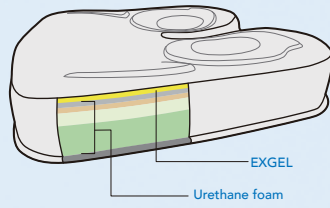
(Professor Makiko Tanaka, Yamaguchi Prefectural University. Japanese Society of Pressure Ulcers)



Benefit of EXGEL[®] cushions

Multilayer of EXGEL and foam

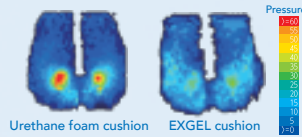
Multilayered foams of different density and EXGEL provide not only pressure redistribution but also stable and comfortable seating while keeping the cushion weight light.



Pressure redistribution and skin protection

When the body weight is applied, EXGEL changes its shape in every direction and conforms to the body shape maximizing the contact surface so the pressure is supported by wider area and evenly redistributed.

EXGEL also moves along with client's body movement. It buffers shearing forces and reduces the risks of skin break down.



Easy to use and maintain

EXGEL goes back to the original shape once the load is removed, which means re-adjustment of gel is not required. EXGEL does not bottom out nor puncture. Cover is water resistant and machine washable.

Surface material of the cushion body can be easily wiped off or disinfected by spraying disinfectant. Just place the cushion on wheelchair and it is ready to use. Very simple and user friendly for both wheelchair users and care-providers.

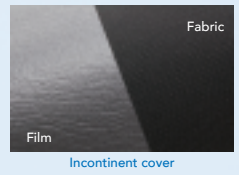


Cushion covers

Incontinence cover:

The original cover which comes with the cushion order. High stretch and machine washable. Thin urethane foam used as a layer prevents heat built-up and helps to keep the surface dry.

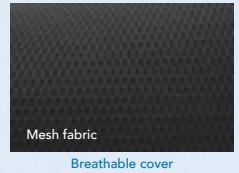
Film lamination layer protects cushion from fluid.



Breathable cover:

Available as an optional cover.

High stretch and machine washable mesh cover. Thin urethane foam used as a layer prevents heat built-up and helps to keep the surface dry.



Both covers' outer fabric passed Cytotoxicity test, ISO 10993-5, and meets flammability requirement for California Bulletin 117.

High quality

All of EXGEL cushions and covers are manufactured in Japan with the finest materials under quality management standard of ISO9001.



Wide range of cushions

Total of 10 different types of cushions meet variety of requirements of wheelchair users and people with restricted mobility.



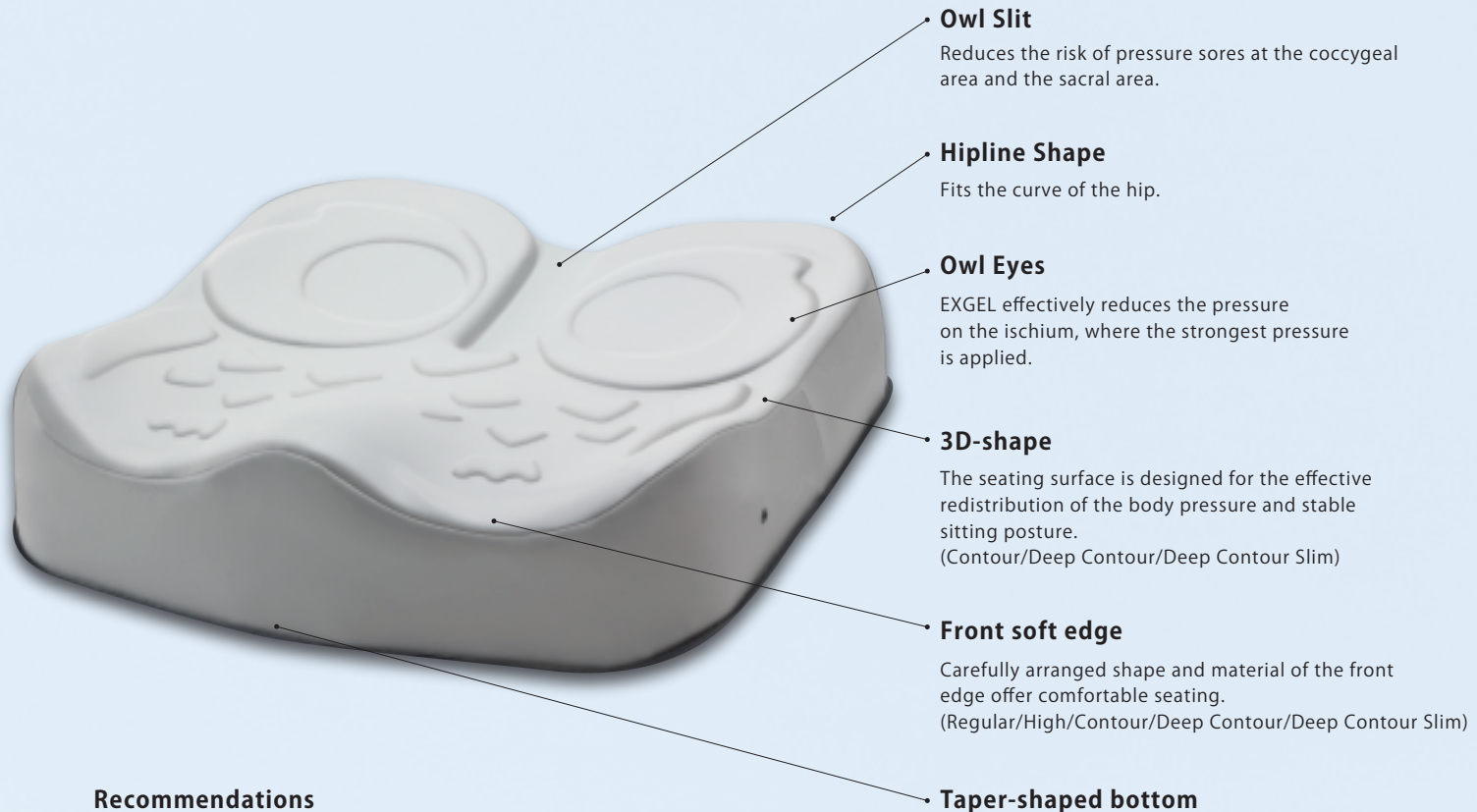
EXGEL wheelchair cushion guide

		Pressure Redistribution	Care for Coccyx and Sacral area	Postural Support	Forward/Reward Stability	Easy-to-Carry
EXGEL Owl Cushion	Regular	★	★ ★	★	★	★
	High	★ ★ ★	★ ★ ★	★	★	★
	Contour	★ ★	★ ★	★ ★	★ ★	★
	Deep Contour	★ ★ ★	★ ★ ★	★ ★ ★	★ ★ ★	★
	Deep Contour Slim	★ ★	★ ★	★ ★ ★	★ ★ ★	★
EXGEL Standard Cushion	Regular	★	★	★	★	★
	High	★ ★	★	★	★	★
	Anti-Thrust	★ ★	★	★ ★	★ ★	★
EXGEL Lite Cushion	Regular	★	★	★	★	★ ★ ★
	High	★ ★	★	★	★	★ ★

Owl® Cushion

Owl shape optimizes pressure redistribution on wheelchairs.
5 types of form variations correspond to the various conditions.

Product Features



Owl Slit

Reduces the risk of pressure sores at the coccygeal area and the sacral area.

Hipline Shape

Fits the curve of the hip.

Owl Eyes

EXGEL effectively reduces the pressure on the ischium, where the strongest pressure is applied.

3D-shape

The seating surface is designed for the effective redistribution of the body pressure and stable sitting posture.
(Contour/Deep Contour/Deep Contour Slim)

Front soft edge

Carefully arranged shape and material of the front edge offer comfortable seating.
(Regular/High/Contour/Deep Contour/Deep Contour Slim)

Taper-shaped bottom

The shape of the bottom is designed for better fitting to the wheelchair seating area.
(Contour/Deep Contour/Deep Contour Slim)

Recommendations

For wheelchair users who need superior pressure redistribution. Suitable for the sacral sitter. Provides moderate postural support. The High is recommended for the client who needs further pressure redistribution. The Contour is recommended for the client needing forward/rearward stability, and for further postural support, the Deep Contour is recommended.

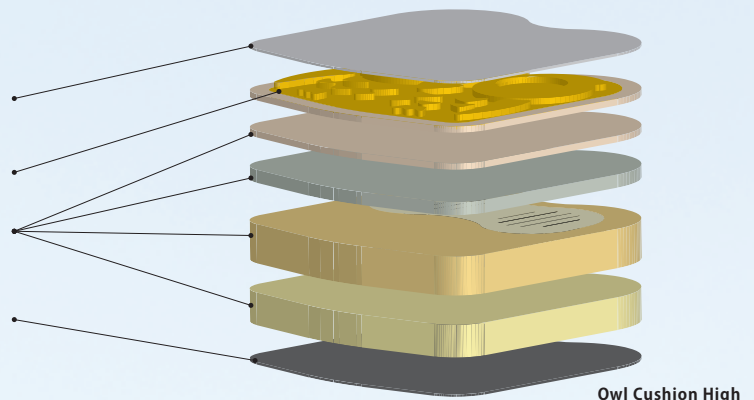
Structure

Synthetic leather on the surface of body can be disinfected with ethanol.

EXGEL excellently redistributes the body pressure.

Multilayered high density urethane foam provides proper immersion and supports stable sitting posture.

Adopted a strong skidproof in base of body and cover.



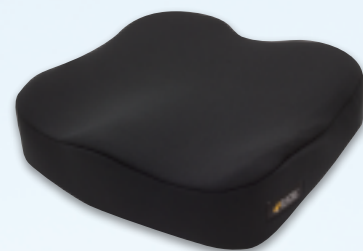
Cover

Incontinence cover: fluid resistant laminated layer protects cushion from moisture.

Breathable cover: breathable mesh fabric dissipates moisture.

Machine washable.

The outer fabric passed Cytotoxicity test, ISO 10993-5, and meets flammability requirements for CA Bulletin 117.

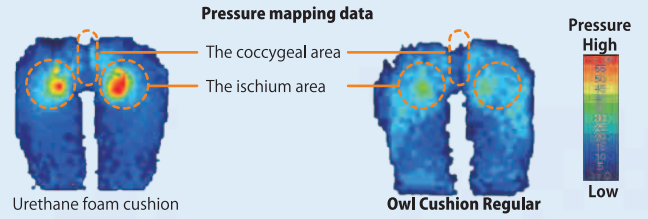


Lineup

Regular



Reduces the pressure on the ischium and the coccygeal area effectively. 4 cm thickness.



High



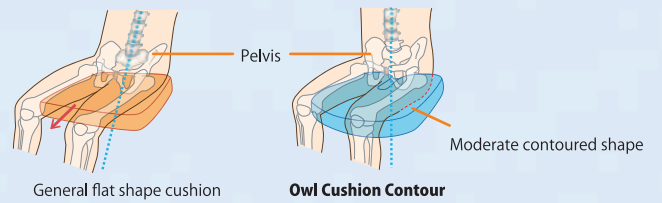
Sufficient height and immersion in order to prevent increased pressure at ischial tuberosities. 8 cm thickness.



Contour



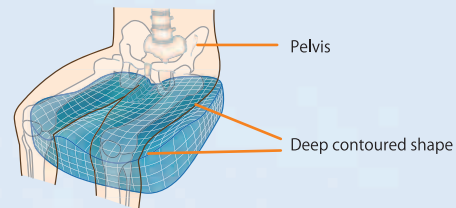
Contoured shape provides comfortable and stable seating. 5.3 - 7.5 cm thickness.



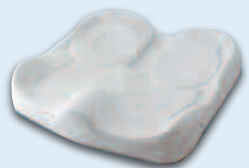
Deep Contour



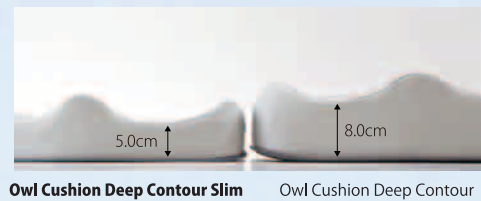
Deeper contoured shape for more effective postural support. 6.5 - 11 cm thickness.



Deep Contour Slim

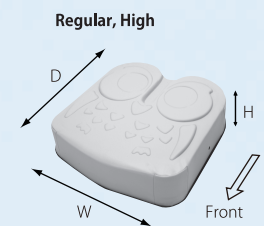


Deep contour low profile type. 3.5 - 8.0 cm thickness.

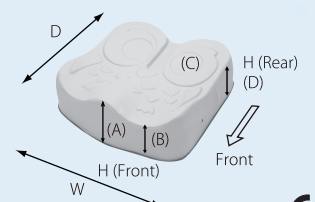


Specifications

	Regular	High	Contour	Deep Contour	Deep Contour Slim
H (cm)	H: 4.0	H: 8.0	Front (A): 7.5 (B): 7.2 Rear (C): 5.3 (D): 6.8	Front (A): 11.0 (B): 8.0 Rear (C): 6.5 (D): 8.8	Front (A): 8.0 (B): 5.0 Rear (C): 3.5 (D): 6.8
W x D (cm)	Product Code	Product Code	Product Code	Product Code	Product Code
36 x 40	OWL21-BK1-3640-E	OWL22-BK1-3640-E	OWL23-BK1-3640-E	OWL24-BK1-3640-E	OWL25-BK1-3640-E
38 x 40	OWL21-BK1-3840-E	OWL22-BK1-3840-E	OWL23-BK1-3840-E	OWL24-BK1-3840-E	OWL25-BK1-3840-E
40 x 40	OWL21-BK1-4040-E	OWL22-BK1-4040-E	OWL23-BK1-4040-E	OWL24-BK1-4040-E	OWL25-BK1-4040-E
46 x 40	OWL21-BK1-4640-E	OWL22-BK1-4640-E	OWL23-BK1-4640-E	OWL24-BK1-4640-E	
40 x 46					OWL25-BK1-4046-E
43 x 46					OWL25-BK1-4346-E
46 x 46		OWL22-BK1-4646-E			OWL25-BK1-4646-E
51 x 46					OWL25-BK1-5146-E



Contour, Deep Contour, Deep Contour Slim



Color		Body: Gray, Cover: Black	
Materials	Body	Top/Sides	Polyurethane synthetic leather
		Filling	EXGEL (Synthetic rubber), Polyurethane foam
	Bottom	100% Nylon (Polyurethane and Acrylic coated)	
Cover	Top/Sides	100% Polyester, Polyurethane foam	
	Bottom	100% Nylon (Polyurethane and Acrylic coated)	

Warranty Limited Warranty of 18 months. Please reference the Instruction Manual for detailed warranty information.

EXGEL® Standard Cushion

EXGEL cushion's standard model, winning the long time popularity as a wheelchair cushion.
 EXGEL used in entire surface redistributes the body pressure effectively.
 EXGEL also buffers shearing forces between the body and cushions.

Product Features



Cover

Incontinence cover: fluid resistant laminated layer protects cushion from moisture.
 Breathable cover: breathable mesh fabric dissipates moisture.
 Machine washable.
 The outer fabric passed Cytotoxicity test, ISO 10993-5, and meets flammability requirements for CA Bulletin 117.

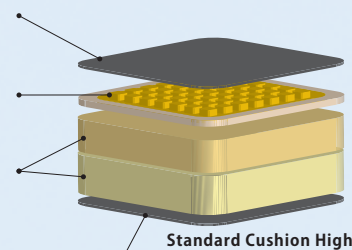


Structure

Synthetic leather on the surface of body can be disinfected with ethanol.

EXGEL excellently redistributes the body pressure.

Multilayered high density urethane foam provides proper immersion, and supports stable sitting posture.



Standard Cushion High

Adopted a strong skidproof in base of body and cover.

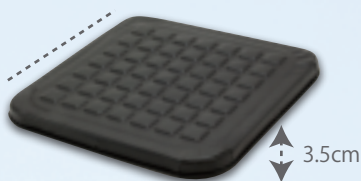
Recommendations

For wheelchair users who need superior pressure redistribution.
 The High is recommended for the client who needs further pressure redistribution.
 The Anti-Thrust is recommended for the client needing forward/rearward stability.

Lineup

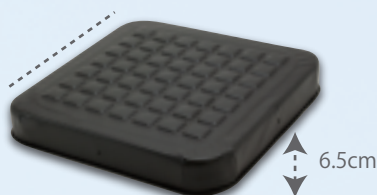
Regular

Easy to use flat style.
 3.5cm thickness.



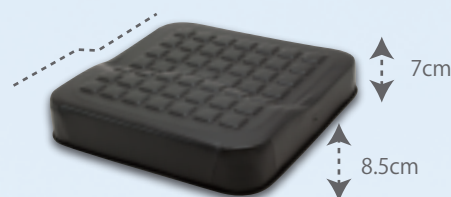
High

Added more immersion and stability.
 6.5cm thickness.



Anti Thrust

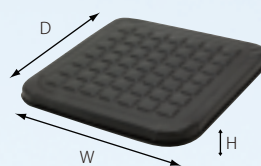
Prevents unwanted forward move of ischium.
 Front: 8.5cm, Rear: 7cm thickness.



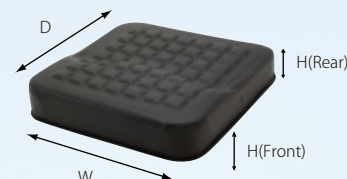
Specifications

	Regular	High	Anti-Thrust
H (cm)	H: 3.5	H: 6.5	Front 8.5 Rear 7.0
W x D (cm)	Product Code	Product Code	Product Code
30 x 30	ESC01-BK1-3030-E	ESC02-BK1-3030-E	
33 x 33	ESC01-BK1-3333-E	ESC02-BK1-3333-E	
36 x 36	ESC01-BK1-3636-E	ESC02-BK1-3636-E	
36 x 40	ESC01-BK1-3640-E	ESC02-BK1-3640-E	
40 x 40	ESC01-BK1-4040-E	ESC02-BK1-4040-E	ESC03-BK1-4040-E
40 x 43	ESC01-BK1-4043-E	ESC02-BK1-4043-E	
40 x 46	ESC01-BK1-4046-E	ESC02-BK1-4046-E	
43 x 40	ESC01-BK1-4340-E	ESC02-BK1-4340-E	
43 x 43	ESC01-BK1-4343-E	ESC02-BK1-4343-E	
46 x 40	ESC01-BK1-4640-E	ESC02-BK1-4640-E	ESC03-BK1-4640-E
46 x 46	ESC01-BK1-4646-E	ESC02-BK1-4646-E	ESC03-BK1-4646-E
46 x 49	ESC01-BK1-4649-E	ESC02-BK1-4649-E	
46 x 51	ESC01-BK1-4651-E	ESC02-BK1-4651-E	
49 x 49	ESC01-BK1-4949-E	ESC02-BK1-4949-E	

Regular, High



Anti Thrust



Color		Body: Black, Cover: Black	
Materials	Body	Top/Sides	Polyurethane synthetic leather
		Filling	EXGEL (Synthetic rubber), Polyurethane foam
	Cover	Bottom	100% Nylon (Polyurethane and Acrylic coated)
		Top/Sides	100% Polyester, Polyurethane foam
	Bottom	100% Nylon (Polyurethane and Acrylic coated)	

Warranty Limited Warranty of 18 months. Please reference the Instruction Manual for detailed warranty information.



EXGEL® Lite Cushion

Easy-to-carry EXGEL cushion for wheelchairs. EXGEL used in ischium area redistributes the body pressure effectively.

Product Features



Cover

Incontinence cover: fluid resistant laminated layer protects cushion from moisture. Breathable cover: breathable mesh fabric dissipates moisture.

Machine washable.

The outer fabric passed Cytotoxicity test, ISO 10993-5, and meets flammability requirements for CA Bulletin 117.

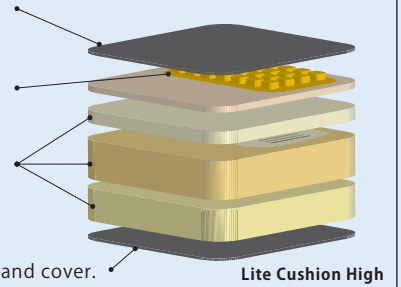


Structure

Synthetic leather on the surface of body can be disinfected with ethanol.

EXGEL excellently redistributes the body pressure.

Multilayered high density urethane foam provides proper immersion, and supports stable sitting posture.



Adopted a strong skidproof in base of body and cover.

Recommendations

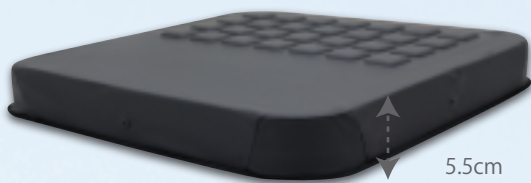
Wheelchair users who need light-weight and high performance pressure relief cushion.

The High is recommended for the client who needs further pressure redistribution.

Lineup

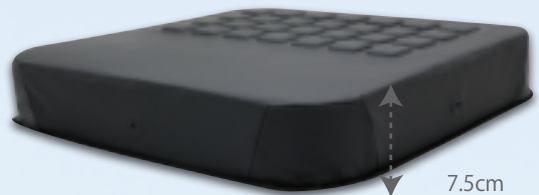
Regular

Easy to use flat style. 5.5cm thickness.



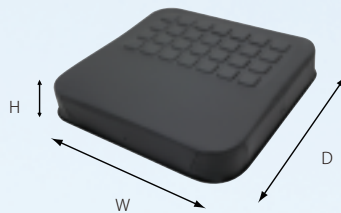
High

Added more immersion and stability. 7.5cm thickness.



Specifications

	Regular	High
H (cm)	H: 5.5	H: 7.5
W x D (cm)	Product Code	Product Code
40 x 40	ELC01-BK1-4040-E	ELC02-BK1-4040-E
46 x 40	ELC01-BK1-4640-E	ELC02-BK1-4640-E
46 x 46	ELC01-BK1-4646-E	ELC02-BK1-4646-E



Color		Body: Black, Cover: Black	
Materials	Body	Top/Sides	Polyurethane synthetic leather
		Filling	EXGEL (Synthetic rubber), Polyurethane foam
		Bottom	100% Nylon (Polyurethane and Acrylic coated)
	Cover	Top/Sides	100% Polyester, Polyurethane foam
Bottom		100% Nylon (Polyurethane and Acrylic coated)	

Warranty Limited Warranty of 18 months. Please reference the Instruction Manual for detailed warranty information.



kaji corporation

www.exgel.jp

Company Information



KAJI CORPORATION

[Head office/Factory] 1295-3, Minari, Okuizumo-cho, Nita-gun, Shimane, 699-1511 JAPAN

[R&D Center] 3-2-7, Hikaridai, Seika-cho, Soraku-gun, Kyoto, 619-0237 JAPAN

[Germany office] Effertzfeld 29 D-41564 Kaarst, Germany

Website: www.exgel.jp

Contact: support_en@exgel.jp



MT Promedt Consulting GmbH

Altenhofstrasse 80 66386 St. Ingbert Germany



EXGEL products are CE-labelled as medical devices (class 1), which means that the characteristics of products meet the requirements of directive 93/42/EEC.

Distributor / Dealer



Medi-Protech

Address: 168 El Nozha st, St. Fatima square, Heliopolis, Cairo, Egypt.

Phone: 02 27 757 252

Mobile: 012 700 200 73 – 012 700 200 76

Email: info@medi-protech.com

Website: www.medi-protech.com